
Pretest

Grade 3 • Science



Student Test Booklet

FOCUScurriculum

Publishing to New York's Core Curriculum

GRADE 3

3

ELEMENTARY-LEVEL SCIENCE PRETEST

WRITTEN PRETEST

Student Name _____

School Name _____

Print your name and the name of your school on the lines above.
The test has two parts. Parts I and II are in this test booklet.

Part I contains 20 multiple-choice questions. Record your answers to these questions on the separate answer sheet. Use only a No. 2 pencil on your answer sheet.

Part II consists of 5 open-ended questions. Write your answers to Part II in this test booklet.

You will have as much time as you need to answer the questions.

DO NOT TURN THIS PAGE UNTIL YOU ARE TOLD TO DO SO.

Published by FOCUScurriculum

33 Milford Drive, Suite 1

Hudson, OH 44236

(330) 656-9008

www.focuscurriculum.com

Copyright © 2012 FOCUScurriculum

Order Number: NYSC-Pre3

Created by Kent Publishing Services, Inc.

Designed by Signature Design Group, Inc.

No part of this publication may be reproduced without purchasing a license from the publisher.

To purchase a license to reproduce this book, contact FOCUScurriculum. The publisher takes no responsibility for the use of any of the materials or methods described in this book, nor for the products thereof.

DIRECTIONS

There are 20 questions on Part I of this test. Each question is followed by three or four answer choices, labeled A-D. Read each question carefully. Decide which choice is the best answer. On the separate answer sheet, mark your answer in the row of circles for each question by filling in the circle that has the same letter as the answer you have chosen. Use a No. 2 pencil to mark the answer sheet.

Read Sample Question S-1 below.

S-1 Frozen water is called

- A fog
- B ice
- C steam
- D vapor

The correct answer is **ice**, which is next to letter **B**. On your answer sheet, look at the box showing the row of answer circles for Sample Question **S-1**. See how the circle for letter **B** has been filled in.

Answer all 20 questions of Part I of this test. Fill in only one circle for each question. Be sure to erase completely any answer you want to change. You may not know the answers to some of the questions, but do the best you can on each one.

When you have finished Part I, go on to Part II. Answer all of the questions in Part II in the space for each question.

Part 1

- 1 Which tool would be most useful for finding the mass of an object?
 - A balance scale
 - B thermometer
 - C microscope
 - D graduated cylinder
- 2 A mineral that looks shiny is metallic. A mineral that is not shiny at all is nonmetallic. What is this property called?
 - A streak
 - B luster
 - C cleavage
 - D specific gravity
- 3 Matter has mass and takes up space. An example of matter is
 - A milk in a glass
 - B heat from a fire
 - C light from a candle
 - D the sound of a violin
- 4 An object is most likely to be flexible if it is made of
 - A glass
 - B stone
 - C wood
 - D rubber
- 5 A good insulator
 - A slows heat transfer
 - B speeds heat transfer
 - C converts heat to light
 - D converts light to heat

- 6 Which unit of measurement could describe the height of a tree?
- A liters
 - B grams
 - C meters
 - D degrees Celsius
- 7 Which sense can be used to determine an object's ability to retain heat?
- A sight
 - B touch
 - C hearing
 - D smell
- 8 When light hits the leaf of a green plant, some of the light is reflected and some is
- A converted to mechanical energy
 - B transferred by convection
 - C absorbed by the plant
 - D converted to electrical energy
- 9 Which kind of energy is produced when the wind turns a windmill?
- A chemical
 - B light
 - C heat
 - D mechanical
- 10 Some animals store energy for a long winter in the form of
- A body heat
 - B inherited traits
 - C body fat
 - D fins and fur

- 11 Which physical structure would best help a rabbit hide from a fox during a winter in New York State?
- A strong hind legs
 - B sharp eyesight
 - C claws for digging
 - D white fur
- 12 Animals hibernate when
- A the season changes to winter
 - B new predators move nearby
 - C they get hungry
 - D it is time to migrate
- 13 Desert plants and animals must be able to survive with very little
- A oxygen
 - B sunlight
 - C water
 - D food
- 14 Many kinds of whales swim down the Pacific coast in the winter. They have their babies in warmer water before heading back to the north in the spring. This is an example of a behavior for survival called
- A dormancy
 - B camouflage
 - C hibernation
 - D migration
- 15 Which process causes a tadpole to become a frog?
- A germination
 - B reproduction
 - C growth
 - D elimination

- 16 Which would be a good way to demonstrate the effect of Earth's gravity?
- A diving off a diving board
 - B measuring the evaporation of water
 - C measuring the height of an oak tree
 - D swimming in the ocean

Note that question 17 has only three choices.

- 17 A vacuum cleaner rests in the corner of the room. Then a student pulls it to the center of the room. What has changed?

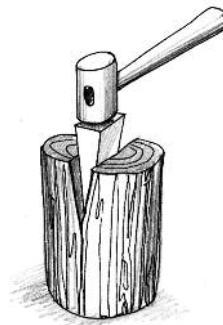
- A its mass
- B its position
- C its size

- 18 A screw is a special type of

- A inclined plane
- B pulley
- C lever
- D wheel and axle

- 19 The wedge shown in the picture is used to split wood. The wedge is an example of

- A a magnet
- B a nonstandard unit
- C a wheel and axle
- D a simple machine



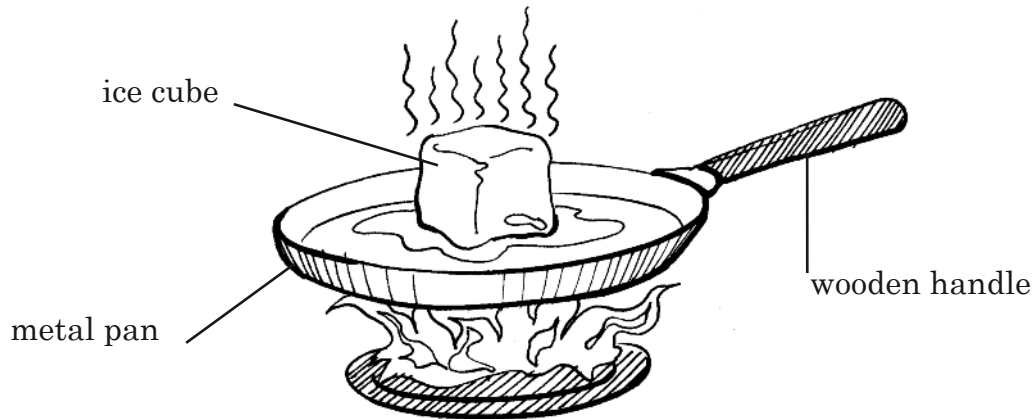
- 20 Lifting a heavy box with a pulley is an example of

- A converting chemical energy to mechanical energy
- B Earth's gravitational pull on an object
- C energy flowing through an ecosystem
- D a force applied by a simple machine

Part II

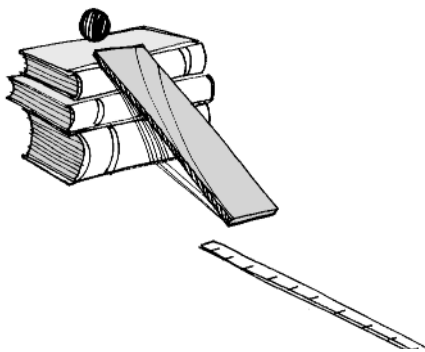
Directions (21-25): Record your answers in the space provided below each question.

21 The diagram below shows an ice cube melting in a pan over a stove burner.



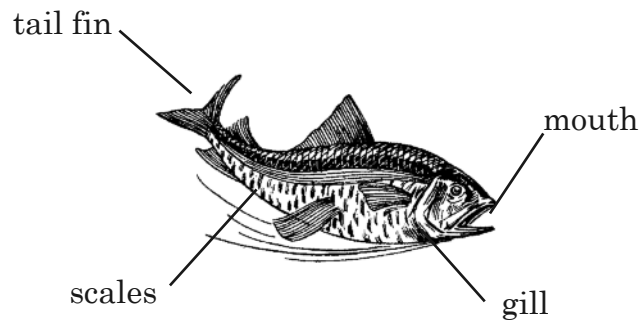
Identify which of the three parts labeled in the diagram heated up first after the burner was turned on. [1]

22 The diagram below shows a ball about to roll down an inclined plane onto a table.



Identify the force that will slow and stop the ball as it rolls along the table. [1]

23 The diagram below shows a fish as it swims forward.



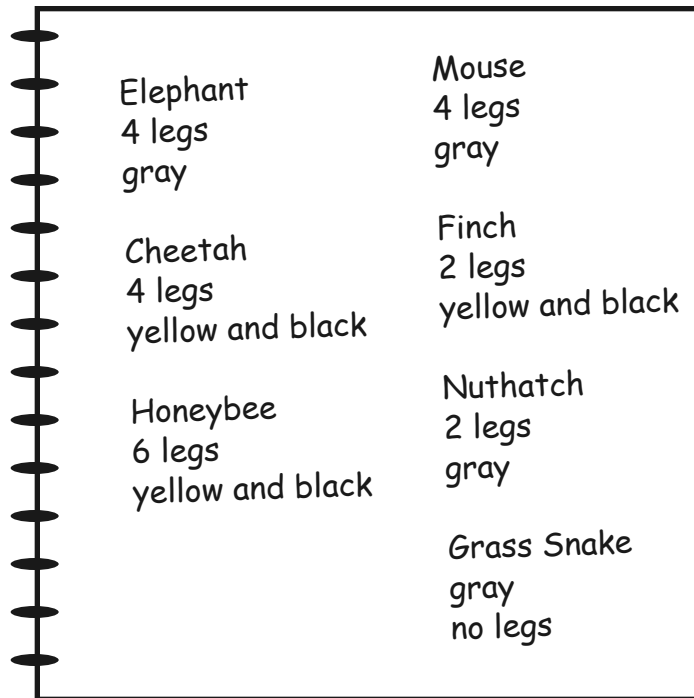
Which part would help most if it needed to escape from a predator? [1]

24 The man has found an easy way to move a heavy rock.



Identify the simple machine he is using. [1]

25 Jon went to the zoo and made notes about some animals he observed.



The notebook contains the following notes:

Elephant	Mouse
4 legs	4 legs
gray	gray
Cheetah	Finch
4 legs	2 legs
yellow and black	yellow and black
Honeybee	Nuthatch
6 legs	2 legs
yellow and black	gray
	Grass Snake
	gray
	no legs

Jon plans to organize the information into a table like the one below. Complete the chart by adding the missing headings to the table. [2]

Animal	_____	_____

Answer Sheet

S-1 (A) ● (C) (D)

1. (A) (B) (C) (D)

2. (A) (B) (C) (D)

3. (A) (B) (C) (D)

4. (A) (B) (C) (D)

5. (A) (B) (C) (D)

6. (A) (B) (C) (D)

7. (A) (B) (C) (D)

8. (A) (B) (C) (D)

9. (A) (B) (C) (D)

10. (A) (B) (C) (D)

11. (A) (B) (C) (D)

12. (A) (B) (C) (D)

13. (A) (B) (C) (D)

14. (A) (B) (C) (D)

15. (A) (B) (C) (D)

16. (A) (B) (C) (D)

17. (A) (B) (C) (D)

18. (A) (B) (C) (D)

19. (A) (B) (C) (D)

20. (A) (B) (C) (D)

**Grade 3 Elementary-Level Science Pretest
Core Curriculum Correlation and Answers**

Item	Standard	Answer
1	4/PS3.1e	A
2	4/PS3.1b	B
3	4/PS3.1a	A
4	4/PS3.1c	D
5	4/PS4.1c	A
6	4/PS3.1d	C
7	4/PS3.1b	B
8	4/PS4.1d	C
9	4/PS4.1d	D
10	4/LE5.2e	C
11	4/LE5.1b	D
12	4/LE5.2f	A
13	4/LE3.1c	C
14	4/LE5.2d	D
15	4/LE5.1a	C
16	4/PS5.1c	A
17	4/PS5.1b	B
18	4/PS5.1f	A
19	4/PS5.1f	D
20	4/PS5.1f	D
21	4/PS4.1c	metal pan
22	4/PS5.1d	friction
23	4/LE3.1c	tail fin
24	4/PS5.1f	lever
25	1/LE3.1a	Number of Legs, Color